

Higher Quality
Better Service!

EXAM SELL

Certified IT practice exam authority

Accurate study guides, High passing rate!

Exam Sell provides update free of charge in
one year!



<http://www.examsell.com>

Exam: **E20-393**

Title: Unity Solutions Specialist
Exam for Implementation
Engineers

Version: DEMO

1.A storage administrator has requested a recommendation on upgrading their VNX5600 to a comparable Unity storage array. The solution requires a maximum capacity of 3.5 PB.

To meet the administrator's requirement without over provisioning the capacity, which Unity Hybrid storage array is recommended?

- A. Unity 300
- B. Unity 400
- C. Unity 500
- D. Unity 600

Answer:D

Explanation:

Unity 600 delivers 1.2 TB to 3.0 PB max raw capacity.

Incorrect Answers:

A: Unity 300 delivers 3.6 TB to 900 TB max raw capacity

B: Unity 400 delivers 1.2 PB to 1.5 PB max raw capacity

C: Unity 500 delivers 1.2 TB to 2.1 PB max raw capacity

Reference:

<https://store.emc.com/us/Product-Family/EMC-Unity-Products/EMC-Unity-600-Hybrid-Flash-Storage/p/EMC-Unity-600-Hybrid-Storage>

2.What is the minimum VMware Hypervisor version a server must be running in order to support the deployment of a UnityVSA system?

- A. 4.0
- B. 5.0
- C. 5.5
- D. 6.0

Answer:C

Explanation:

UnityVSA requirements include: VMWare ESXi 5.x, 6.x

References: <http://sweden.emc.com/products-solutions/trial-software-download/unity-vsa.htm>

3.Which feature is supported on a UnityVSA operating environment?

- A. Asynchronous Replication
- B. MCC Write Caching
- C. Quick Start Pool Provisioning
- D. Data at Rest Encryption

Answer: A

Explanation:

Asynchronous Unified Replication is available natively on UnityVSA. This allows file and block resources to be replicated between UnityVSA systems, between UnityVSA and physical Unity systems, and also locally back to the same UnityVSA system

4.A storage administrator is creating a host profile in Unisphere to provide host access to block storage resources using the iSCSI protocol. The host initiators were not automatically discovered and must be manually added.

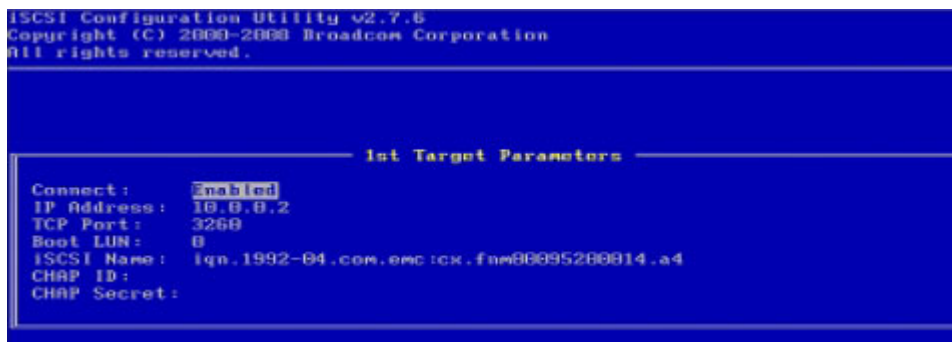
In addition to the SAN host IQN, what other configuration can be performed through the "Create iSCSI Initiator Wizard" window?

- A. Enable and disable CHAP settings
- B. Create Mutual CHAP secret
- C. Create Global CHAP secret
- D. Enter CHAP username and secret

Answer: D

Explanation:

A sample from a Broadcomm BIOS is provided in the figure below, illustrating the IQN assignment for the VNX iSCSI target.



References:

<https://www.emc.com/collateral/hardware/technical-documentation/h8229-vnx-vmware-tb.pdf> (page 34)

5.A storage administrator is configuring a storage pool on a Unity system containing Flash disks and SAS disks.

What tier will the system assign to each of the disk types?

- A. Flash: Extreme Performance SAS: Performance
- B. Flash: Performance SAS: Capacity
- C. Flash: Extreme Performance SAS: Capacity
- D. Flash: Capacity SAS: Performance

Answer: A

Explanation:

Hybrid pools can have up to 3 tiers (Extreme Performance, Performance, and Capacity).

For the Extreme Performance tier, use only SAS Flashdrives.

For the Capacity tier, use only SAS drives.