

Higher Quality
Better Service!

EXAM SELL

Certified IT practice exam authority

Accurate study guides, High passing rate!

Exam Sell provides update free of charge in
one year!



<http://www.examsell.com>

Exam : NS0-171

**Title : FlexPod Implementation
and Administration**

Version : DEMO

1.What are two valid cluster interconnect switches? (Choose two.)

- A. NetApp CN610
- B. Cisco Nexus 5596
- C. Cisco Nexus 9504
- D. Cisco Nexus 7004

Answer: AB

Explanation:

Reference https://library.netapp.com/ecm/ecm_get_file/ecmp1115327

2.A Cisco UCS system is operating in FC End-Host Mode. The fabric Interconnects are uplinked into Nexus 5672UP switches using native FC. The service profiles are unable to boot from SAN using FC. When executing the show flogi database command on the Nexus switches, only the Fabric Interconnect port WWNs are visible. No service profile WWNs are shown.

What caused this issue?

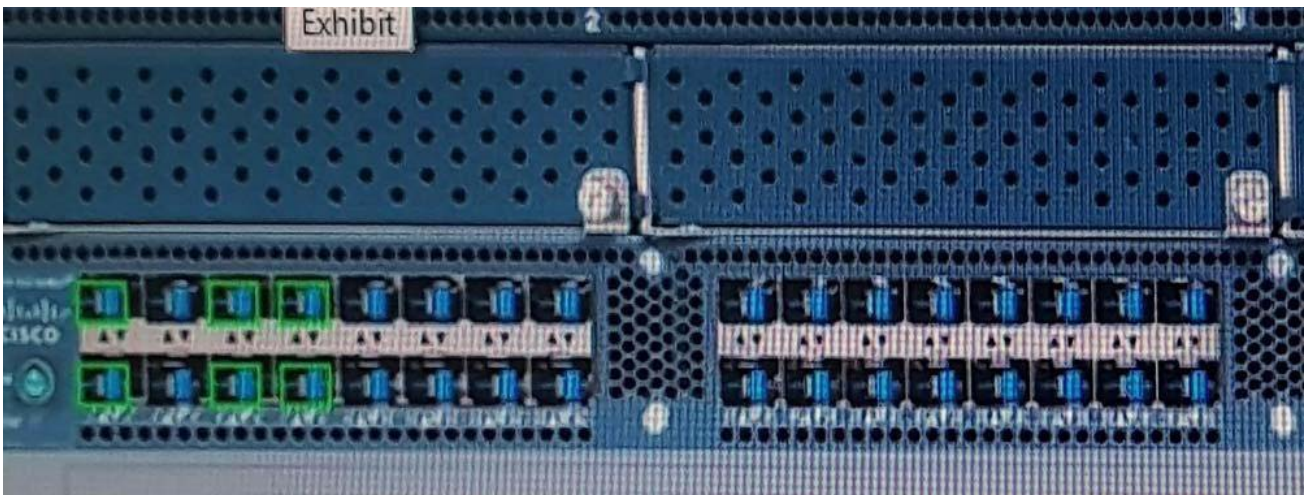
- A. The Nexus switches do not have NPV enabled.
- B. The Nexus must be configured for FCoE instead of native Fibre Channel.
- C. The Nexus switches do not have NPIV enabled.
- D. The zoning on the Nexus switches is incorrect.

Answer: C

Explanation:

Reference https://www.cisco.com/c/en/us/products/collateral/servers-unified-computing/ucs-manager/whitepaper_c11-697337.html

3.Click the Exhibit button.



An administrator is building a FlexPod configuration with UCS 6296 Fabric Interconnect devices that support legacy Fibre Channel (FC) connections. The administrator uses UCS Manager to configure the unified ports on the Fabric Interconnect.

Referring to the exhibit, how many ports will FC use after the configuration is completed?

- A. 16
- B. 2
- C. 1
- D. 6

Answer: A

4.An administrator is configuring a Flexpod Datacenter solution. The UCS service profiles will use FCoE connectivity to the NetApp cluster.

Which pool is needed to configure the vHBA templates?

- A. WWPN pool
- B. MAC pool
- C. IQN pool
- D. WWNN pool

Answer: A

5.Which LIF role is used for SnapMirror traffic on a system running clustered Data ONTAP?

- A. intercluster
- B. node-management
- C. interconnect
- D. cluster-management

Answer: A